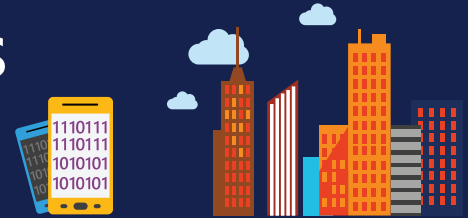
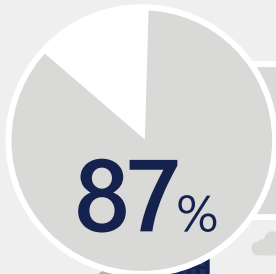


How to protect your business in a mobile world



The workplace has no boundaries



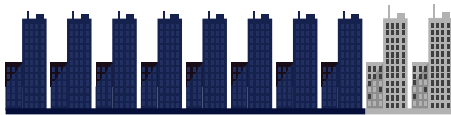
87% of the SMB mobile workforce spends at least 20% of their time away from their desk.¹

6/10



employees agree that allowing staff to work from home benefits their SMB.¹

But is your data safe?



8 out of 10

businesses say they have experienced a data breach as a result of careless or malicious employees.²

74% say employees' storage of or access to sensitive data on mobile devices has substantially increased over the past 24 months.³

78% of businesses say careless employees are the biggest threat to data security.⁴

68% say customer records are at risk because of employees' ability to access and store them on their mobile devices.³

Protect your data wherever it goes

1



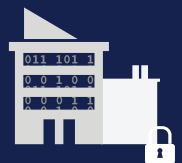
A customer submits her personal data, including social security number and bank account info to you.

2



You email it to a colleague for processing. With the click of a button you restrict editing, copying, and forwarding the customer's sensitive information.

3



With the information protected, your business dramatically reduces the risk of data theft —along with related costs and reputation damage.

...one of the many things your business can do with Microsoft's Enterprise Mobility + Security

¹Techaisle 2015 SMB Mobility Adoption Trends Study. ²Ponemon Institute 2012. ³Ponemon Institute 2016. ⁴Ponemon Institute 2015.